

LG 3850SER02

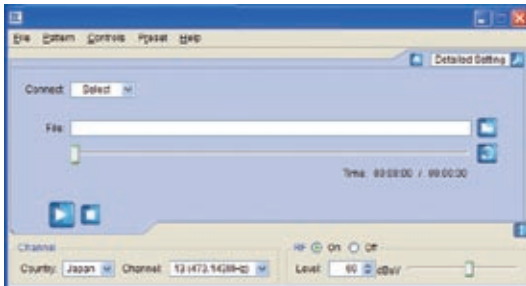
ISDB-T SOFTWARE

When LG 3850SER02 ISDB-T SOFTWARE is installed on the LG 3850, the LG 3850 functions as an ISDB-T signal generator, and the LG 3850 can be configured from a PC.

FEATURES

USB 2.0

Use a USB 2.0 connection between a PC and the LG 3850 to install broadcast-systems, configure the LG 3850, and play back broadcast transport streams on the LG 3850.



Still Images

Output four different still-image patterns seamlessly.

Audio Signal

Output separate audio signals with frequencies of 400 Hz or 1 kHz to the left and right channels.

Operating Environment

PC Specifications Required to Use This Product

OS Microsoft Windows XP SP3

CPU Intel (R) Core (TM) 2 Duo, 1.6 GHz (equivalent or superior)

Memory 1 GB or more

HDD 1 GB or more of free space

USB port USB 2.0 (1 port)

The license key must be entered when the software is installed.

SPECIFICATIONS

Broadcast System

Digital Terrestrial Television Broadcasting ISDB-T (ARIB-STD-B31) (*1)

*1: In accordance with the operation conditions (ARIB-TR-B14), only MODE2 and MODE3 are supported.

Transmission Parameters

Layers: A, B, C
Mode: MODE2, MODE3
Guard Interval: 1/4, 1/8, 1/16, 1/32
Carrier Modulation: DQPSK, QPSK, 16QAM, 64QAM
Convolutional Code Rate: 1/2, 2/3, 3/4, 5/6, 7/8
Time Interleaving Length: 0 to 8
Number of Segments: The number of segments can be specified for each layer, but the total number of segments cannot exceed 13.

Partial Reception: Can be specified (*2)
 *2: If the PCR packets in the TS are not independent, the partial receiver's PCR cannot be updated.

External TS Input Specifications

Input Packet Format: 204 bytes

Supported Stream: MPEG-2 TS (ISO/IEC13818-1)

Input Data Rate: 32.507936 Mbps (*3)

Number of PCRs That Can Be Updated: up to 8

Update Parameter: PCR

*3: Only for broadcast TS

Internal Signal

Pseudo Random Signal: PN23 and PN15 (*4)

Still-Image Pattern: Colorbar (simple animation), ramp, monoscope, natural picture

Format: 1920×1080i (HDTV), 320×180p (1seg)

Audio (Tone): 1 kHz (LR), 400 Hz (LR), 1 kHz (L) + 400 Hz (R)

RF Signal Generator

Output Channel: Japan (channels 1 to 62), Brazil (channels 7 to 69) (*4)

Resolution: 6 MHz (*5)

Output Range: 10 to 99 dBμV (75 Ω termination)(*6)

Frequency Bandwidth: 5.7 MHz

*4: Pseudo random signals and the Brazil output channels can be set from a PC.

*5: Configuration can only be performed through the setting of channels. (Japan channels and Brazil channels include a 1/7 MHz offset.)

*6: This is the guaranteed operating range. The guaranteed performance range is 39 to 99 dBμV (75 Ω termination). If signals in the range of 10 to 38 dBμV (75 Ω termination) will be generated, we recommend that an external attenuator be connected to the LG 3850.

Control Application

The following settings can be configured from a PC that is connected to the LG 3850 through USB 2.0.

Broadcast System Installation:

ISDB-T

Output Level: 1 dB steps (10 to 99 dBμV: 75 Ω termination)

Output Channel: Japan (channels 1 to 62), Brazil (channels 7 to 69)

Pseudo Random Signal: PN23 and PN15

Still-Image Pattern: Colorbar (simple animation), ramp, monoscope, natural picture

Audio (Tone): 1 kHz (LR), 400 Hz (LR), 1 kHz (L) + 400 Hz (R)

Broadcast TS Operations: Select, playback, stop

Recall: 99 selectable preset configurations

Loading and Saving: Preset configurations can be configured, loaded, and saved through LG 3850 panel operations.

Alarm Displays: Can't connect to USB device, etc.

Licenses

This product can only be used on one LG 3850.

It cannot be installed on multiple LG 3850s.

Environmental Conditions

Same as the LG 3850

Contents

License key 1
 CD-ROM
 Includes transfer data and the control application..... 1
 Instruction manual 1

The company and product names in this document are trademarks or registered trademarks of their respective holders.