

LV5333 MULTI SDI MONITOR

Portable & Compact - Also 3G!



The LV5333 is the latest addition to the line of portable waveform monitors from Leader Instruments. Inheriting the same superior qualities of the LV5330, the LV5333 is a multi-SDI monitor equipped with an accurate video signal waveform and vectorscope displays. The 6.5" high-fidelity TFT LCD screen reproduces high quality picture images. CINELITE® II as well as other functions that were optional on the LV5330 now come included in this product, making it not only an attractive technical instrument but also a creative one at the same time. Just like the previous waveform monitors from Leader, various multi-display combinations allow for complete and easy monitoring while full-screen presentations provide a wealth of information and enable detailed review of the material. It also offers an embedded audio signal display allowing level-meter measurements.

MAIN FEATURES:

- Supports 3G-SDI, HD-SDI and SD-SDI signals.
- Built-in 6.5" TFT LCD XGA Display (1024 x 768) for superb, crisp waveforms and picture representations.
- CINELITE® II & CINELITE® ADVANCED come standard with this product.
- Histogram, User Gamma Display, Gamut and Level Error functions are also now standard.
- Line Selector - selects any line of the video signal to be displayed and provides waveform, vector and 5-bar representations of the selected line.
- Cable Length, EXT Phase, and Field Frequency Deviation Display.
- Detects Closed-Captions EIA608 and EIA708.
- Supports up to 16 channels of embedded audio signals.
- Includes an AES/EBU output connector for two audio channels.
- Extracts embedded audio signals and sends two user-selectable audio channels to the headphone jack.
- Audio shortcut button located on the front panel.
- Includes "Screen Capture" to capture the displayed image and save it to the internal memory (RAM) or in to an USB memory device.
- The internal memory holds up to 30 presets allowing quick access to favorite instrument setups.
- Instrument can be remote controlled from a PC over an Ethernet network.
- Can be mounted on a tripod for on-camera fitting.
- Universal AC Power Supply allows for worldwide use.

REAR PANEL CONNECTORS

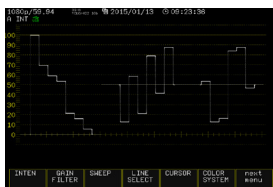
- **EXT REF:** External loop-through reference input connectors.
- **DIGITAL AUDIO OUTPUT:** Digital Audio AES/EBU Output Connector
- **REMOTE:** Remote connector provides remote control of preset selections.
- **DC INPUT:** Input XLR connector for the DC power supply.
- **SDI INPUT:** 3G/HD/SD SDI (A and B) input connectors.
- **SDI OUTPUT:** Reclocked SDI signal output connector.
- **ETHERNET:** Ethernet remote control to execute panel operations. It supports TELNET, FTP and SNMP.



Two LV5333s on a Rackmount (LR-2752)



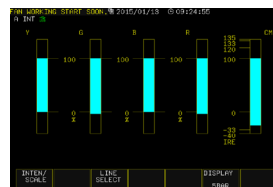
LV5333 Partial View of the Rear Panel



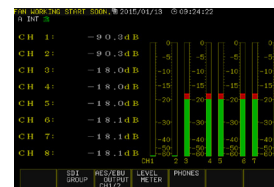
WAVEFORM



VECTOR



5 BAR / GAMUT



AUDIO



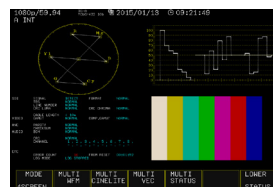
PHASE DIFFERENCE



CINELITE



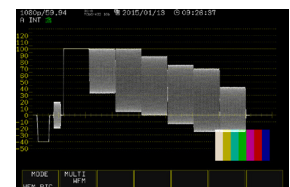
CINEZONE



MULTI SCREEN



PICTURE/WAVEFORM



WAVEFORM/PICTURE

AVAILABLE OPTIONS:

- **SLOG-2 & CUSTOM FALSE COLORS DISPLAY - LV5333-OPSLOG:** This option adds an enhancement to the Exposure Evaluation and Gamma Correction for cameras with SLOG-2 (High Key / Low Key function), Zoom-in and Aperture function, and Custom False Colors function.