

VIDEO MULTI RASTERIZER

Simultaneous Multiple Input Viewing and Monitoring

New

CE
Upon request

RoHS

Monitor not included



HD-SDI

SD-SDI



* If you only use the flanges on the front panel to mount the instrument, the instrument case may be deformed, or the instrument may fall.

LV 7800 MULTI RASTERIZER

GENERAL

The LV 7800 is a new-concept multi rasterizer that enables you to freely combine all the LV 5800 series input and output units to provide flexible support for a variety of situations.

FEATURES

Slots for Four Units

The LV 7800 is equipped with two input slots and two input/output slots, which means you can install a maximum of four units. Each input and output unit operates independently.

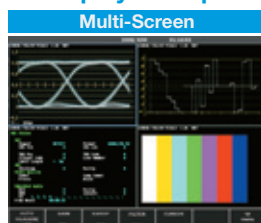
External Sync Signal Input

The LV 7800 can receive tri-level sync signals and NTSC or PAL black burst signals. You can display video signal waveforms in phase with an external sync signal.

DVI-I Connector

You can view the various LV 7800 displays on an external XGA (1024 × 768) display by connecting the display to the DVI-I connector. Additionally, the vector, picture, and audio displays support displays with aspect ratios of 16:9 / 16:10 (in squeeze mode).

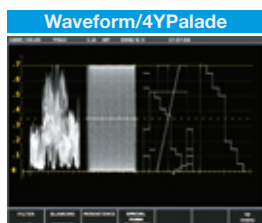
Display Examples



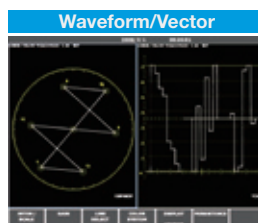
EX, LV 58SER01A, LV 58SER02
1 sets each are installed



EX, LV 58SER01A 2 set are installed



EX, LV 58SER01A 2 sets are installed



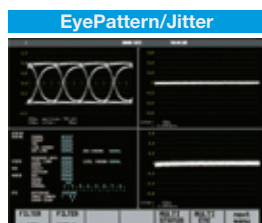
EX, LV 58SER01A 1 set is installed



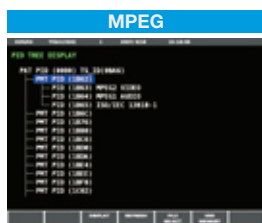
EX, LV 58SER01A 1 set is installed



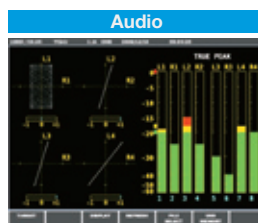
EX, LV 58SER01A 1 set is installed



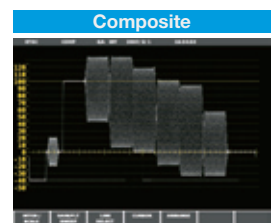
EX, LV 58SER01A 2, LV 58SER02
1 sets are installed



EX, LV 58SER04 1 set is installed



EX, LV 58SER40A 1 set is installed



EX, LV 58SER03 1 set is installed

Squeeze mode



Supports aspect ratios of 4:3, 16:9 and 16:10.

Preset Settings

The LV 7800 can store up to 60 frequently used setting configurations. You can also directly recall preset settings that have been assigned to the shortcut button.

Key Lock

The key lock feature is useful in preventing mistaken changes to the settings and in preventing accidental operations on the LV 7800.

USB Port

By connecting a USB memory device to the front panel USB port, you can take screen captures, record data, and save preset settings.

Ethernet Port

By running TELNET or FTP on a PC that is connected to the LV 7800 through the rear panel Ethernet port, you can control the LV 7800 remotely, monitor errors, and transfer files. (SNMP is also supported.)

Parallel Remote Connector

You can load preset settings, detect errors, switch inputs, and apply analog audio signals* through the rear panel remote connector.

*To measure analog audio signals, an LV 58SER40A (DIGITAL AUDIO) unit is necessary.

SPECIFICATIONS

LV 7800

Input/Output Slots

SLOT1, SLOT2: Slots for input units
SLOT3, SLOT4: Slots for input, output, or input/output units
Combinations of Supported Units

Unit	Does the Slot Support the Units			
	SLOT1 (Input)	SLOT2 (Input)	SLOT3 (Input/Output)	SLOT4 (Input/Output)
LV 58SER01A (SDI INPUT)	Yes	Yes	Yes	Yes
LV 58SER02 (EYE PATTERN)	Yes*	Yes*	Yes*	Yes*
LV 58SER03 (COMPOSITE INPUT)	Yes	Yes	Yes	Yes
LV 58SER04 (MPEG DECODER)	Yes	Yes	Yes	Yes
LV 58SER06 (3G-SDI INPUT)	Yes	Yes	Yes	Yes
LV 58SER20 (DVI-I OUTPUT)	No	No	Yes	Yes
LV 58SER21 (ANALOG COMPONENT OUTPUT)	No	No	Yes	Yes
LV 58SER40A (DIGITAL AUDIO)	Yes*	Yes*	Yes*	Yes*

* Only one of this type of unit can be installed in an LV 7800.

DVI-I Output

Output Connector: 1
Signal Format: Single link T.M.D.S
 Analog RGB
Display Format: XGA(The effective resolution is 1024 x 768.)
 Wide displays are also supported (squeeze mode). * Only if the LCD panel has a resolution conversion feature.
DDC: Not supported
HOT PLUG: Not supported

Screen Capture

Screen Capture: Capture the screen to an image file (only one screen capture is stored in internal memory)
Media: Internal memory (RAM) and USB memory
Data Output: Save screen captures in bitmap format to USB memory or send them to a PC over an Ethernet connection.

Preset Settings

Number of Presets: 60
Media: Internal memory (RAM) and USB memory
Recall Method: Front panel, remote connector, or Ethernet command
Copying Saved Settings: Copy preset settings to USB memory.
Loading Saved Settings: Copy all preset settings from USB memory to the LV 7800.

External Sync Signal Input

Input Connector: 1 pair of BNC connectors

Input Signal: Tri-level sync or NTSC/PAL black burst
Input Impedance: Passive loopthrough, 15 kΩ
Input Return Loss: 30 dB or higher
Maximum Input Voltage: ±5 V (DC + peak AC)
 * If the video signal waveform is displayed using an external sync signal as a reference, the waveform phase one clock before or after an SDI signal is inserted or the power is turned on is indefinite.

External Control Connectors

USB Port

Compliant Standard: 2.0
Device: Only large-memory devices are supported.
Function: Take screen captures, record data, and save preset settings

Ethernet Port

Compliant Standard: IEEE802.3 10BASE-T/100BASE-T
Connector: RJ-45
Function: Control the LV 7800 and monitor errors from a PC and save screen captures and data to a PC

Remote Connector

Connector: 25-pin D-sub (female)
Signal: LV-TTL level (Low active)
Function: Load preset settings, detect errors, switch inputs, and receive analog audio signals*
 * To measure analog audio signals, an LV 58SER40A (DIGITAL AUDIO) unit is necessary.

Headphone Output*

Output Signal: SDI-embedded audio signal, or an audio signal that was received from an external source
Output Connector: One 6.3-mm stereo jack
Volume Adjustment: Volume knob
 * Headphone output is enabled when an LV 58SER40A (DIGITAL AUDIO) unit is installed.

Environmental Conditions

Operating Temperature: 0 to 40 °C
Operating Humidity: 85 %RH or less (no condensation)
Operating Environment: Indoors
Operating Altitude: Up to 2,000 m
Overvoltage Category: II
Pollution Degree: 2

Power Supply Requirements

90 to 250 VAC, 50-60 Hz, 150 W max.

Dimensions and Weight

482 (W) x 88 (H) x 450 (D) mm (not including protrusions), 8.5 kg

Accessories

Instruction manual 1
 Power cord 1
 Cover/Inlet stopper 1
 25-pin D-sub connector..... 1
 25-pin D-sub connector cover..... 1

■ Rear Panel (LV 58SER01A x 3 and LV 58SER40A x 1)



■ Optional Units (Factory Option) Each unit is the same as the 5800 series units.

	LV 58SER01A SDI input		LV 58SER06 3G-SDI INPUT
	LV 58SER02 Eye pattern unit		LV 58SER20 DVI-I output unit
	LV 58SER03 Composite video input		LV 58SER21 Analog component output
	LV 58SER04 MPEG decoder		LV 58SER40A Digital audio I/O

■ LV 7800-01 REMOTE CONTROLLER (sold separately)



■ LV 7800op70 Speakers (Factory option)

You can have two 0.8 W stereo speakers installed in the LV 7800 rasterizer as a factory option. These speakers enable you to check audio. When you remove the headphones, the audio output switches to the speakers.